



dTIMS BA includes the following key features:

### Inventory Management

Aggregate asset data in a relational database that features temporal and hierarchical functionality.

### Performance Modeling

Flexible enough to handle all deterministic and probabilistic models.

### Budget Analysis

Cross Asset Analysis and Automated Investment Planning are two features that enable trade-off analysis and "what-if" scenarios across multiple assets.

### Works Programming

Generate long-term work programs, then update as work is completed.

### Reporting

Generate standard, custom, map-based, or ad-hoc reports that can be used across your agency.

### Enterprise Integration

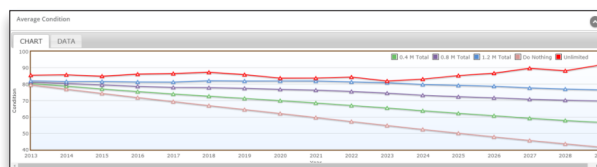
Integrate with dTIMS OM, dTIMS BI, GIS systems, financial systems, and other legacy systems in your enterprise.

## Strategic Asset Management

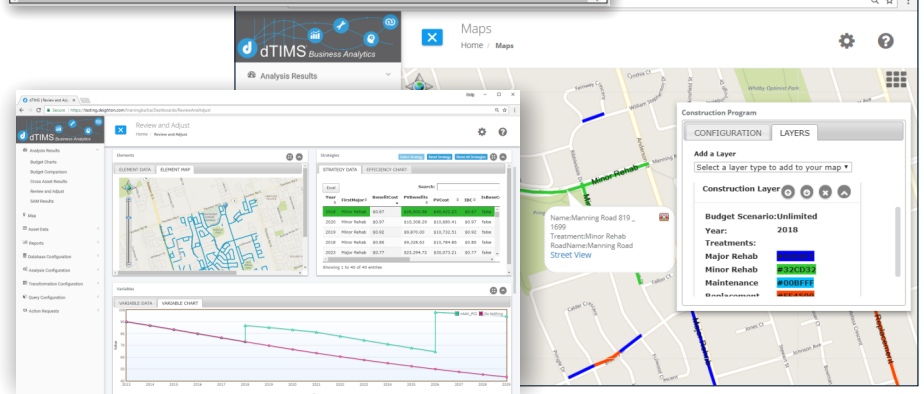
dTIMS Business Analytics (BA) is a scalable Life Cycle Cost Analysis (LCCA) tool. It provides you with the insight to prioritize asset management projects and defend your investment decisions.

dTIMS BA provides the answers to five fundamental questions:

1. What *assets* do I own?
2. What is the *current condition* of those assets?
3. What do I need to do to *maintain or improve* the assets in the most cost effective manner?
4. Is my agency's investment level on track to achieve our *performance goals*?
5. What does my agency's *risk profile* look like at our current investment level and is this something that we are comfortable with?



Average Network Condition



Generate Strategies and Review Works Program

Works Program



#### About Deighton.

Deighton Associates Limited (Deighton) has established itself as one of the world leaders in providing asset management systems and asset management expertise at the strategic, tactical, and operational levels for agencies around the world. Recognized as the premier software product for infrastructure asset management, dTIMS® is used to manage large infrastructure networks in Africa, Asia, Australia, Canada, Europe, New Zealand, and the United States. These infrastructure networks include hundreds of thousands of miles of pavements, thousands of bridges, and millions of wastewater, storm water, and fresh water distribution pipe assets.

**North America** - 223 Brock St N. Whitby ON Canada L1N 4H6 | T: 905.665.6605 | [info.web@deighton.com](mailto:info.web@deighton.com) | [www.deighton.com](http://www.deighton.com)

**Australia** - PO Box 3303 East Perth WA 6892 Australia | T: +61488216206 | [paul.odocherty@deighton.com](mailto:paul.odocherty@deighton.com)

**Switzerland** - Technoramastrasse 10 CH-8404 Winterthur Switzerland | T: +41 52 244 33 02 | [alain.hueppi@deighton.com](mailto:alain.hueppi@deighton.com)

**Austria** - Naglergasse 7/9 A-1010 Vienna Austria | T: +43 1 504 6777 | [alfred.weninger@deighton.com](mailto:alfred.weninger@deighton.com)